

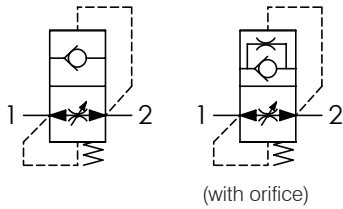
Winman Hortum Patlama Katriçleri / Hose Burst Valves



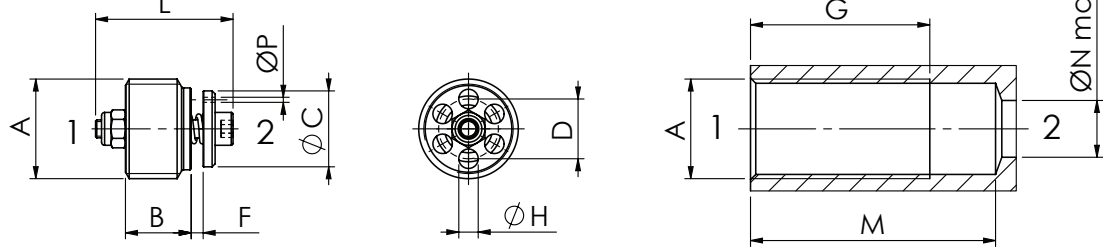
Sipariş Kodu / Ordering Code

01	Hose burst valves		VUBA
02	Size	BSPP 1/4	140
		BSPP 3/8	380
		BSPP 1/2	120
		BSPP 3/4	340
		BSPP 1	100
03	Setting	Example: setting 0.7 mm	F _{..._}
		Omit if not required	
04	Orifice on flat poppet	Example: hole 1.5 mm	P _{..._}
		Omit if not required	

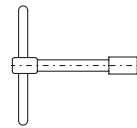
Hydraulic circuit / Hidrolik Devre


F setting on request

Orifice on flat poppet on request



Mineral oil	ISO 6743/4
Oil viscosity	15-250 mm ² /s
Max contamination index with filter	ISO 4406:1999 Classe 19/17/14
Oil temperature	-20°C+80°C
Ambient temperature	-20°C+50°C
It is necessary a filter use to protect the valve (advised filtration 15 µm)	
Max leakage	0,25 cm 5 drops/min



Tool

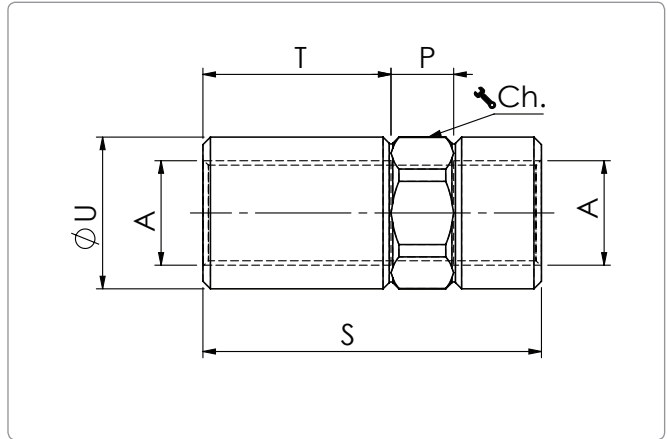
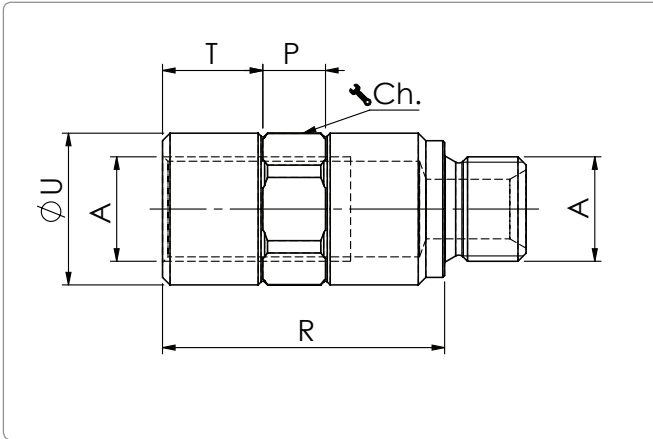
Dimensions

Tool's Type	Type	Weight kg
61700001	VUBA140	0,12
61700002	VUBA380	0,13
61700003	VUBA120	0,15
61700004	VUBA340	0,18

Teknik Özellikler / Technical characteristics

Type	A	Max. Flow l/min	Max. Pressure bar	B	C	D	G	H	M	N	Tightening torque Nm/ lbt	Approx weight kg/ lb
VUBA140	BSPP 1/4	25	350	8,2	10,4	8	25	2,5	19	7	2	0,008
VUBA380	BSPP 3/8	50		11	12,7	10	30	3,25	23	9,5	3	0,014
VUBA120	BSPP 1/2	80		13	15	11,5	33	4	29	12	4	0,025
VUBA340	BSPP 3/4	150		18	18	14,5	42	5,2	34	16	10	0,054
VUBA100	BSPP 1	180		20	26	19	48	7	40	22	12	0,1

Winman Hortum Patlama Katriçleri / Hose Burst Valves



Housings M/F / Gövde M / F

Type	A	R	P	T	U	Ch.	Approx weight kg
61100087	BSPP 1/4	39	10	13	20.5	19	0.07
61100088	BSPP 3/8	45	10	16	24.5	22	0.10
61100089	BSPP 1/2	52	10	19	29.5	27	0.17
61100090	BSPP 3/4	61	12	23	35.5	32	0.26
61100091	BSPP 1	67	15	25.5	44.5	41	0.4

Housings F/F / Gövde F / F

Type	A	S	P	T	U	Ch.	Approx weight kg
61100092	BSPP 1/4	48	10	13	20.5	19	0.09
61100093	BSPP 3/8	54	10	30	24.2	22	0.11
61100094	BSPP 1/2	73	10	46,5	29.5	27	0.20
61100095	BSPP 3/4	74	12	44	35.5	32	0.27

Setting "F" / Ayar "F"

